

Call Manager - Options and Preferences Window

General

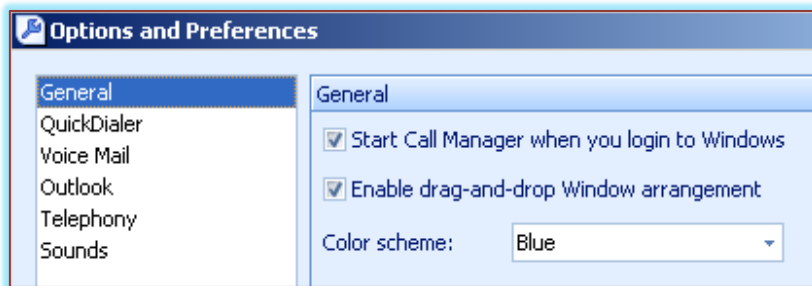
This window contains panels that are used to configure many Call Manager options, components, and functions. The options that are available depend upon the features for which the user is authorized.

DISPLAY OPTIONS AND PREFERENCES WINDOW

- ❖ Do one of the following:
 - Click **Tools** on the **Main Menu**.
 - Click the **Application Button**.
 - Right-click the **Call Manager** icon in the **System Tray**.
- ❖ Click **Options**.
- ❖ The **Options and Preferences** window will display.

GENERAL

This panel determines the startup behavior and appearance parameters of Call Manager.



- ❖ Open the **Options and Preferences** window.
- ❖ Click the **General** link in the menu on the left side of the window.
- ❖ Change the options as desired. These options are explained below.
 - **Start Call Manager When You Login to Windows** - When this option is selected, Call Manager will open every time you login to Windows.
 - **Enable Drag and Drop Window Arrangement** - To have the capability to move the viewer between the Main Window Content Area and Satellite windows, select this option. This means the user will be able to have more than one window displayed at a time.
 - **Color Scheme** - This option is used to change the color of the Call Manager windows. The color scheme options are Blue, Black, and Gray.
- ❖ Click **OK** to exit the **Options** window.