

USING THE SPOTLIGHT

The Spotlight is used to draw attention to a particular area of the desktop. This is a feature that is only available with the Windows operating system. The Spotlight can be displayed in four different shapes: circle, square, star, or arched frame. To use the Spotlight feature, follow the instructions below

✚ Press the **SMART Board icon** (see illustration at right) on the **System Tray** which is located on the right side of the **Task Bar**.



✚ Press the **Other SMART Tools** option in the shortcut menu.

✚ Select **Spotlight** from the list of other tools.

✚ A spotlight will appear on the screen.

✚ To change the Spotlight's appearance:

✦ Press the **Menu** button that appears at the bottom of the **Spotlight**.

✦ Select **Shape** from the list.

✦ Press one of the shapes: circle, square, star, or frame.

✦ The shape will change to the one specified.

✚ To change the background transparency:

✦ Press the **Menu** button that appears at the bottom of the **Spotlight**.

✦ Select **Transparency** from the list that appears.

✦ A list of degrees of transparency will appear.

✦ Select one of the options from this list.

✚ To **Move** or **Resize** the **Spotlight**:

✦ Click the background of the **Spotlight** and then drag it in the direction to which the Spotlight is to be moved.

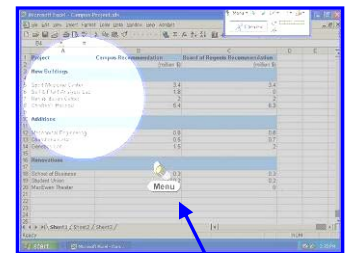
✦ Press the edge of the **Spotlight** area and then drag it outwards to resize the **Spotlight**.

✦ To rotate the **Spotlight**, press the edge of the **Spotlight** area and then drag in a **circular** motion.

✚ To remove the **Spotlight**, do one of the following:

✦ Press the **Menu** button and then select **Exit**.

✦ Press the **Esc** key on the keyboard.



Menu Button