



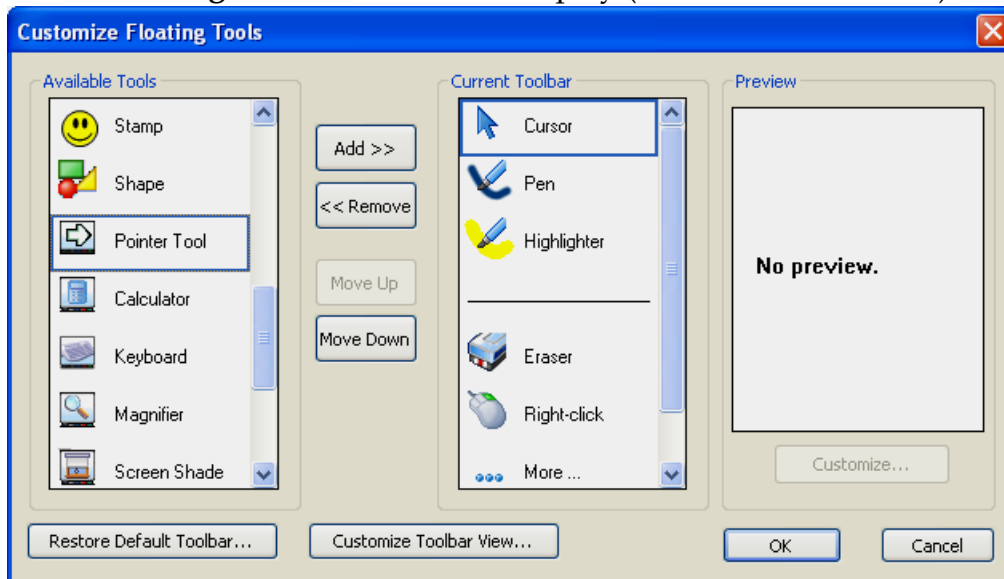
USING THE SCREEN POINTER TOOL

The Screen Pointer tool is used to position an arrow anywhere on the SMART Board screen. It is useful for emphasizing a screen element or area of the information being displayed. The Screen Pointer can be rotated to it is pointing at the correct angle. This tool can be used to highlight important information on the screen.

Before the Screen Pointer can be used, it has to be added to the Floating Tools Bar or the Start Center.

ADDING THE SCREEN POINTER TO THE FLOATING TOOL BAR

- ✦ Click the **SMART Board** icon on the **Task Bar** (see illustration). 
- ✦ Select **Floating Tools** from the list that appears.
- ✦ Click the **More** button at the bottom of the **Floating Tools Bar** (see illustration). 
- ✦ In the list that appears, click **Customize Floating Tools**.
- ✦ The **Customize Floating Tools** window will display (see illustration below).



- ✦ Under **Available Tools**, scroll down to located the **Pointer Tool** option.
- ✦ Click the **Pointer Tool** option.
- ✦ Click the **Add>>** button in the second column of the window.
- ✦ Click the **Move Up** or **Move Down** buttons to change the position of the **Pointer Tool** option on the **Floating Tools Bar**.
- ✦ Click **OK** to accept the changes.
- ✦ The **Pointer Tool** button will appear on the **Floating Tools Bar**.

ACTIVATING THE POINTER TOOL

- ✦ Click the **Pointer Tool** button on the **Floating Tools Bar**.
- ✦ Drag the **Pointer Tool** to the desired position on the screen.
- ✦ To reposition the **Pointer Tool**, rotate it by pressing and dragging with your finger.
- ✦ To de-activate the **Pointer Tool**, double-press on the tool.