









START CENTER

The Start Center is used with many of the tools that allow the user to interact with the SMART Board, such as accessing the Notebook software, recording videos, activate the video player, display the keyboard, open the Floating Tools bar, access the Control Panel, and access the Help Center.

START CENTER TOOLBAR

There are eight buttons on the Start Center toolbar. Seven of the buttons are used to launch the most commonly used applications. The More button is used to customize the Start Center to meet individual needs. The table below provides a description and illustration of each of these buttons.

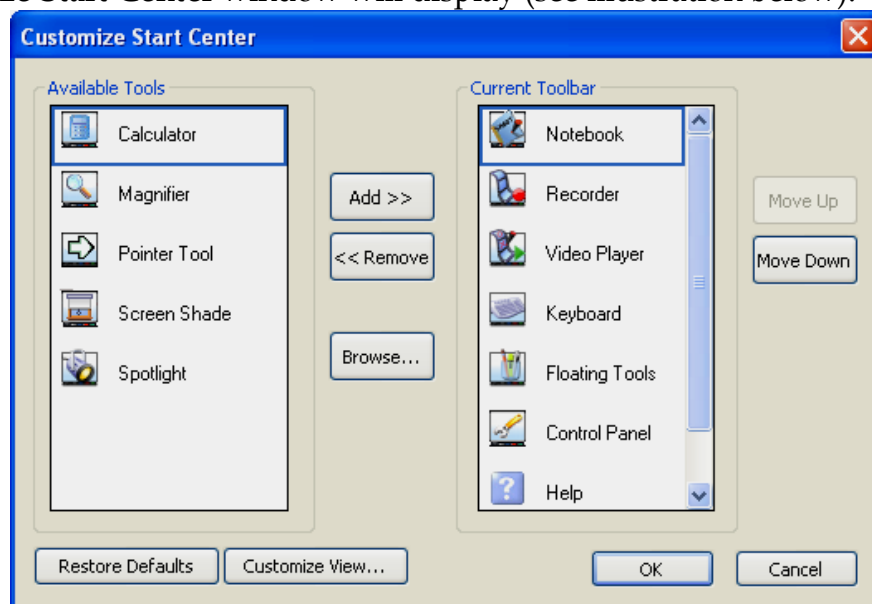
Button	Illustration	Description
Notebook		Use this button to open the Notebook Software that is available for use with the SMART Board. This notebook can be used to record text items or graphics while using the SMART Board.
Recorder		This button is used to open the SMART Recorder. The SMART Recorder is used to record actions that are performed on the SMART Board.
Video Player		To open the SMART Video Player, click this button. The video player is used to play video files located on the computer or to view content from a camera, VCR, CD-ROM, or DVD.
Keyboard		The keyboard can be displayed on the SMART Board by clicking on this button. The keyboard is used to input text into a program, such as Word, or the SMART Notebook while using the SMART Board.
Floating Tools		To display the Floating Tools toolbar, click this button. These tools are used to access the pen tool, the highlighter, eraser, screen capture, and other key functions of the SMART Board.
Control Panel		To open the Control Panel for the SMART Board, click this button. The Control Panel is used to perform specific administrative tasks for the SMART Board.
Help Center		To obtain information on how to use the SMART Board, click this button. Information can be obtained on any aspect of the SMART Board.
More Button		The More Button is used to customize the SMART Center Toolbar. The options under here are Customize Start Center, Orient SMART Board, About Start Center, and Close Start Center.

ADDING ITEMS TO START CENTER

When working with the SMART Board, it is possible to add up to eleven (11) interactive tools or programs to the Start Center. For example, it is possible to add the Spotlight tool or the Magnifier tool or to add a program such as Microsoft Word to the Smart Center. When an item is added to the Smart Center, a button representing that tool or program will appear on the center toolbar. In order to add an application, you must have access to the program's .exe file.

When the Smart Center is customized, the changes are saved with the user profile for the operating system you are using. The next time you log onto the computer, the changes will still appear.

- ✦ Double-click on the **SMART Board Icon** to open the **Start Center**.
 - ✦ The Smart icon looks like the illustration at the right.
 - ✦ It is located on the right side of the **Task Bar**.
- ✦ Press the **More** button to access the menu of options (see illustration at right).
- ✦ Select **Customize Start Center** from the list of options.
- ✦ The **Customize Start Center** window will display (see illustration below).



- ✦ In the **Available Tools** column of the window, click the tool that is to be moved.
- ✦ Click the **Add>>** button to move the item to the **Current Toolbar** column.
- ✦ To **Remove** a button from the **Current Toolbar** area, click the tool and then click the **<< Remove** button.
- ✦ Use the **Move Up** or **Move Down** buttons to change the order of the items on the **Current Toolbar**.
- ✦ Click the **Customize View** button to change the size of the icons on the **Smart Center** toolbar.
- ✦ To change back to the default toolbar settings, click the **Restore Defaults** button.
- ✦ To add an application, such as Microsoft Word, to the **Start Center**:
 - ✦ Click the **Browse** button.
 - ✦ The **Open** dialog box will open.
 - ✦ Search through the folders to locate the program that is to be added.
 - ☐ Click the **My Computer** icon in the left frame of the window.
 - ☐ Double-click on **Local Disk (C)** from the list of drives.
 - ☐ Double-click on **Program Files**.
 - ☐ Scroll through the folders to locate the program's **.exe** file.
 - ☐ It may be necessary to open several files before the **.exe** file is located.
 - ✦ Once the file is located, click the **Open** button.
 - ✦ The **icon** for the program will appear in the **Current Toolbar** list.
- ✦ Click the **OK** button to accept the changes.