

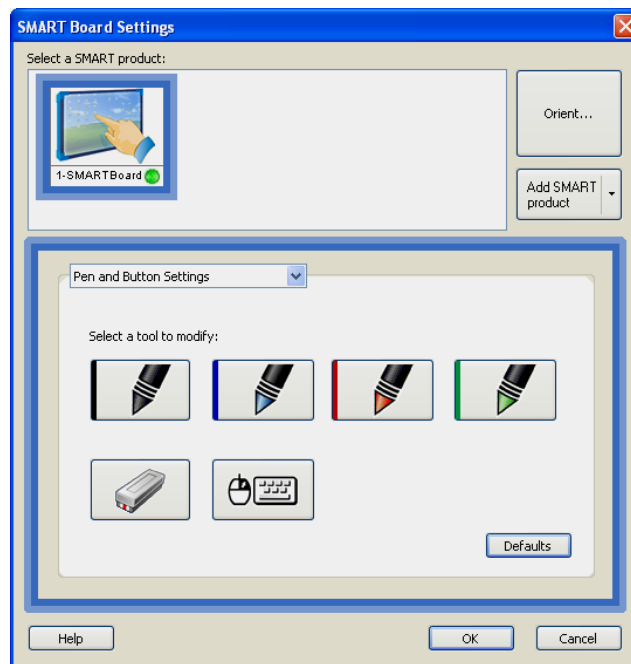
CHANGE PEN AND BUTTON SETTINGS

When working with the pens on the SMART Board, it is possible to change the line color, width, ends, thickness, and transparency for each pen. If the transparency is increased, the pen acts like a highlighter.

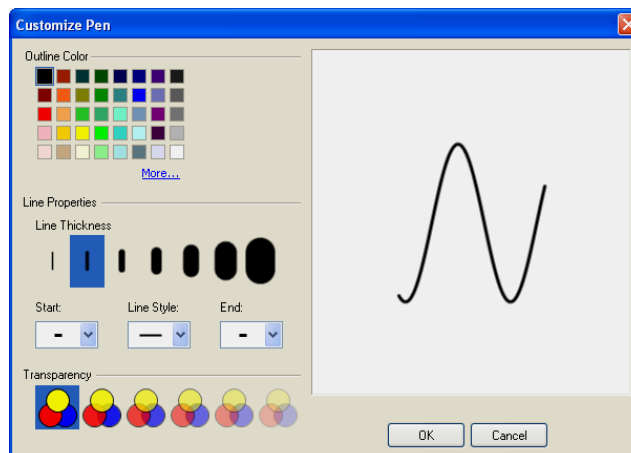
- ✦ To access the **Control Panel**, do one of the following:
 - ✦ Double-click the **SMART Board** icon on the **Task Bar** (see illustration at right).
 - ✦ Click the **Control Panel** button on the **Smart Center** bar.

OR

- ✦ Click the **SMART Board** icon on the **Task Bar**.
- ✦ Click **Control Panel** in the list of options.
- ✦ Click the **Pen and Button Settings** link to open the **SMART Board Settings** dialog box.
- ✦ The **SMART Board Settings** dialog box will display (see illustration below).



- ✦ The **Pen and Buttons Settings** option will display in the list box above **Select a tool to modify**.
- ✦ Press the **Pen** button for the pen that is to be changed.
- ✦ It is also possible to make changes to the eraser, mouse, and keyboard options by pressing the appropriate button.
- ✦ The **Customize Pen** dialog box will display (see illustration).



- ✦ Make adjustments to the color, thickness, line ends, line style, and transparency of the pens as desired.
- ✦ Once the changes have been made, click the **OK** button to exit the **Customize Pen** dialog box.
- ✦ Make any changes to any of the other pens, eraser, mouse, or keyboard as desired.
- ✦ Once all the changes have been made, press the **OK** button to close the **SMART Board Settings** dialog box.