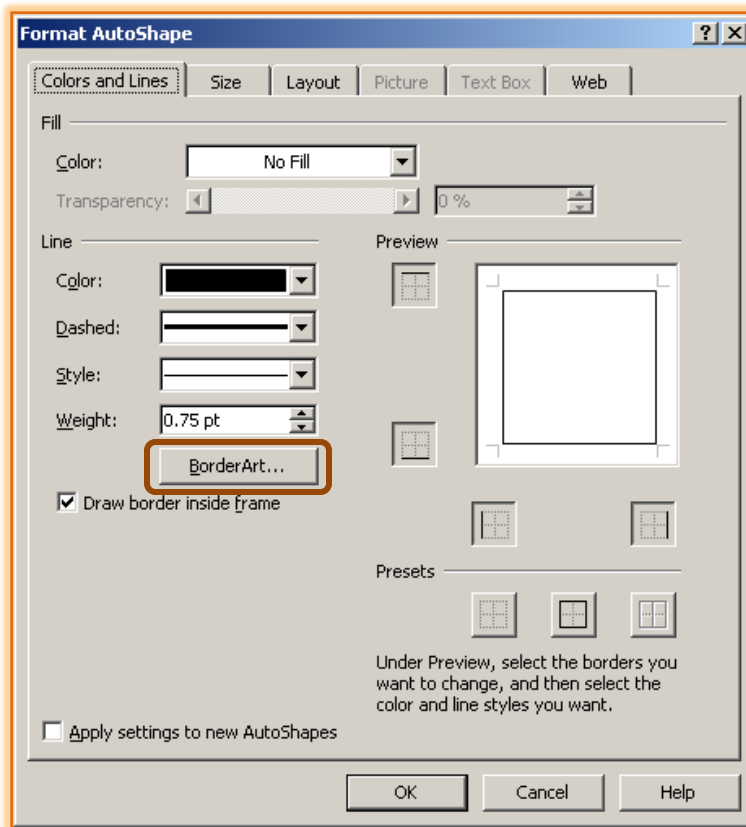


## WORKING WITH BORDER ART

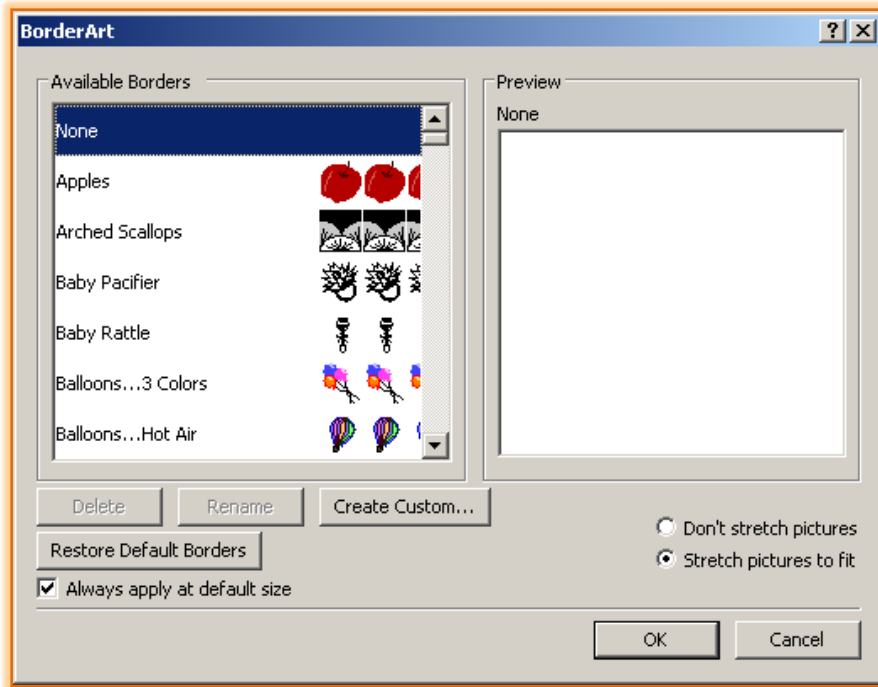
Border Art uses graphic images to create a border effect around a frame. Border Art comes with a large number of borders that are ready for use in a publication. Also, it is possible to turn any graphic image into Border Art.

### Applying Border Art

- ❖ Click the frame to which the **Border Art** is to be applied.
- ❖ Click **Format** on the **Menu Bar**.
- ❖ Click the last button in the list. This button will change depending on the type of frame selected.
- ❖ The **Format** \_\_\_\_\_ dialog box will display.
- ❖ Click the **Colors and Lines** tab (see illustration below).



- ❖ Click the **Border Art** button.
- ❖ The **Border Art** dialog box will display (see illustration on next page).
- ❖ Click one of the **Available Borders**.
- ❖ An image of the border will appear in the box on the right.
- ❖ Click one of the following options:
  - Don't stretch pictures.
  - Stretch pictures to fit.
- ❖ Click **OK** to return to the **Format** \_\_\_\_\_ dialog box.
- ❖ Click the **Weight** up and down arrow to make the border larger or smaller.
- ❖ Click the **Color** drop-down arrow to change the border color.
- ❖ When all the changes have been made, click **OK** to exit the dialog box and save the changes.



### Creating Custom Border Art

- ❖ Click **Format** on the **Menu Bar**.
- ❖ Click the last button in the list. This button will change depending on the type of frame selected.
- ❖ The **Format** \_\_\_\_\_ dialog box will display.
- ❖ Click the **Colors and Lines** tab (see illustration on previous page).
- ❖ Click the **Border Art** button.
- ❖ The **Border Art** dialog box will display (see illustration above).
- ❖ Click the **Create Custom** button.
- ❖ The **Create Custom Border** dialog box will appear (see illustration at right).
- ❖ Click the **Select Picture** button.
- ❖ The **Insert Border Art** dialog box will display.
- ❖ Click a category in the list.
- ❖ Click an image to select it.
- ❖ Click the **OK** button.
- ❖ The **Name Custom** dialog box will display (see illustration at right).
- ❖ Type a name for the border and then click **OK**.
- ❖ Click **OK** again to exit the **Border Art** dialog box.
- ❖ Click **OK** one more time to exit the **Format** \_\_\_\_ dialog box.

