

DEFINING MANY-TO-MANY TABLE RELATIONSHIPS

There are several different ways to define Table Relationships. Relationships can be defined in the Database window or in Design view. The last method provides more control over the Table Relationships. It also displays a quick snapshot of all the relationships for the database. A Many-to-Many Relationship is really two one-to-many relationships tied together through a third table.

CREATING THE PRIMARY KEY

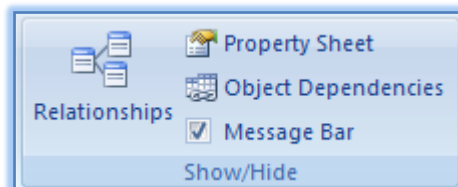
(This step may have been completed if the lesson on Defining One-to-Many Table Relationships was completed earlier.)

- ❖ Open the file **Chamber Access Training** from the area where it was stored.
- ❖ In the **Navigation Pane**, right-click the **Productions** table.
- ❖ Click **Design View**.
- ❖ Once the table is in **Design View**, click the **Row Selector** for the **ID Show** field.
- ❖ Click the **Primary Key** button in the **Tools Group**, if necessary.
- ❖ Click the **View** button to open the table in **Datasheet View**.

OPENING THE RELATIONSHIPS WINDOW

(This step may have been completed if the lesson on Defining One-to-Many Table Relationships was completed earlier.)

- ❖ Click the **Database Tools Tab**.
- ❖ In the **Show/Hide Group**, click the **Relationships** button (see illustration below).



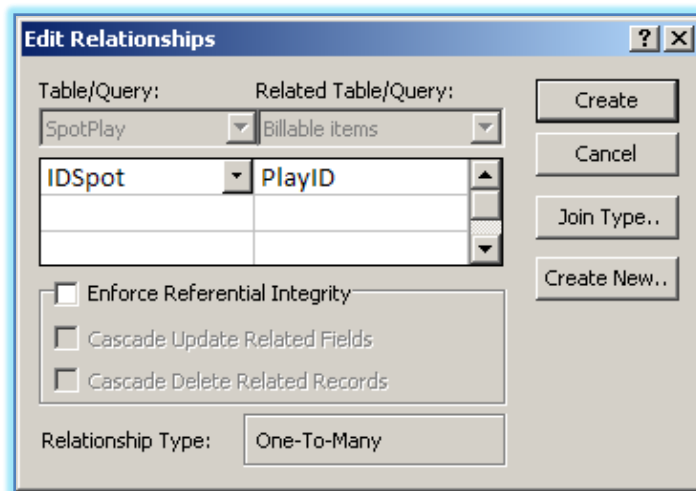
- ❖ The **Representatives** and **Clients** tables should appear in the grid with a join line between them.
- ❖ To select the rest of the tables in the database:
 - Click the **Relationship Tools Design Tab**, if necessary.
 - Click the **Show Tables** button in the **Relationships Group**.
 - The **Show Tables** dialog box will appear (see illustration below). It will contain a list of all the tables in the database.



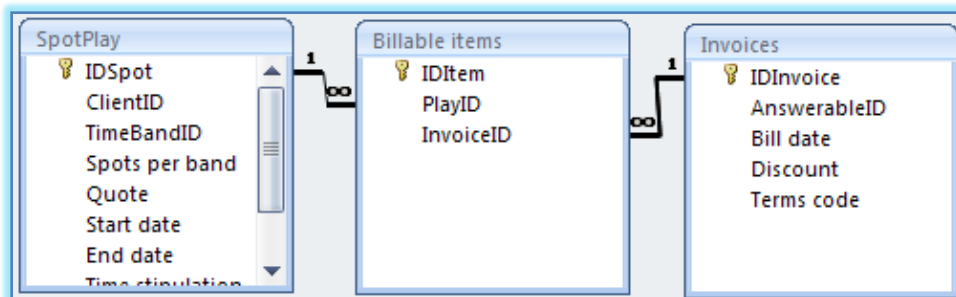
- Click the **Billable Items** table, hold down the **Ctrl** key and select the **Invoices**, **Productions**, **Spot Plays**, and **Time Bands** tables.
- ❖ Click the **Add** button to add them to the **Design Grid**.
- ❖ This will add all the tables to the relationships window.
- ❖ Click the **Close** button to close the **Show Table** dialog box.

ESTABLISHING THE MANY-TO-MANY TABLE RELATIONSHIP

- ❖ Drag the box for the **Invoices**, **SpotPlay**, and **Billable items** to a suitable location in the **Relationships** window so that they are grouped together, placing the **Billable items** box below or between the other two boxes.
- ❖ In the **SpotPlay** table box, click and hold **IDSpot**.
- ❖ Drag the pointer over **PlayID** in the **Billable items** box.
- ❖ Release the mouse button.
- ❖ The **Edit Relationships** dialog box will appear (see illustration below).



- ❖ In the **Edit Relationships** dialog box, click **Enforce Referential Integrity**.
- ❖ Click the **Create** button.
- ❖ In the **Invoices** table box, click and hold **IDInvoice**.
- ❖ Drag the pointer over **InvoiceID** in the **Billable items** box.
- ❖ Release the mouse button.
- ❖ In the **Edit Relationships** dialog box, click **Enforce Referential Integrity**.
- ❖ Click the **Create** button.
- ❖ This will create the Many-to-Many relationship for the **Invoices** and the **SpotPlay** tables (see illustration below).



- ❖ Two one-to-many relationships are created.
- ❖ The middle table is used to establish the many-to-many relationship.