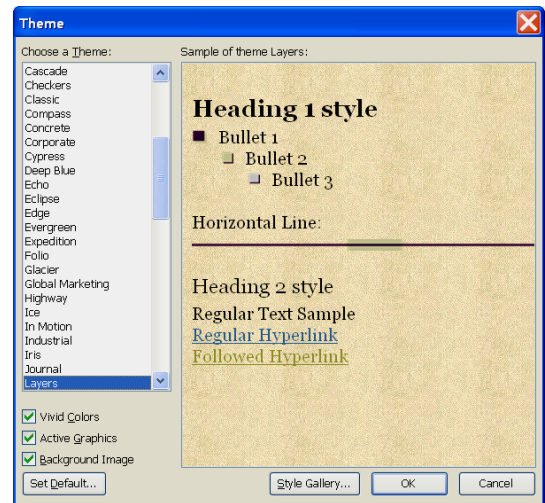


## Applying a Theme to the Page

When creating a new Web page, it is possible to apply a theme to the page. Themes are pre-defined backgrounds and formatting. To apply a theme to this page:

- ❖ Click **Format** on the **Menu Bar**.
- ❖ Click **Theme** from the list that appears.
- ❖ The **Themes** dialog box will appear.
- ❖ Under **Choose a Theme**, click on each of the themes.
- ❖ The layout of the theme will appear in the box on the right side of the dialog box.
- ❖ Click the check box for **Vivid Colors**. This option and the other options are described in the table below.



Option	Description
<b>Vivid Colors</b>	This option is used to display the color scheme in brighter colors.
<b>Active Graphics</b>	To display a livelier set of banners, buttons, bullets, and other graphics, some with animation effects, use this option.
<b>Background Picture</b>	This option is used to display the background image as part of the theme. If this option is not selected, the background will be set to a solid color that corresponds to the theme.

- ❖ Once the **Theme** has been chosen, click the **OK** button to exit the dialog box and apply the theme.